



Registered Remodeler  
**Todd A. Stengel**  
*Todd Stengel Construction, Inc.*  
 161 McCreedy Avenue  
 Louisville, KY 40206  
 (502) 895-8181  
 toddstengel.com

**The** owners of this historic three-story Old Louisville home wanted a master suite that would serve as a personal retreat, but also wanted to maintain the style of the house, in keeping with its well-loved Victorian neighborhood. It was a major challenge for remodeler Todd Stengel to convert a third floor two-bedroom/one bath/efficiency kitchen apartment into a modern master suite, including bedroom, bath, sitting area, closet and laundry, and to add an elevator as well, to keep the third floor accessible to the owners for many years to come.

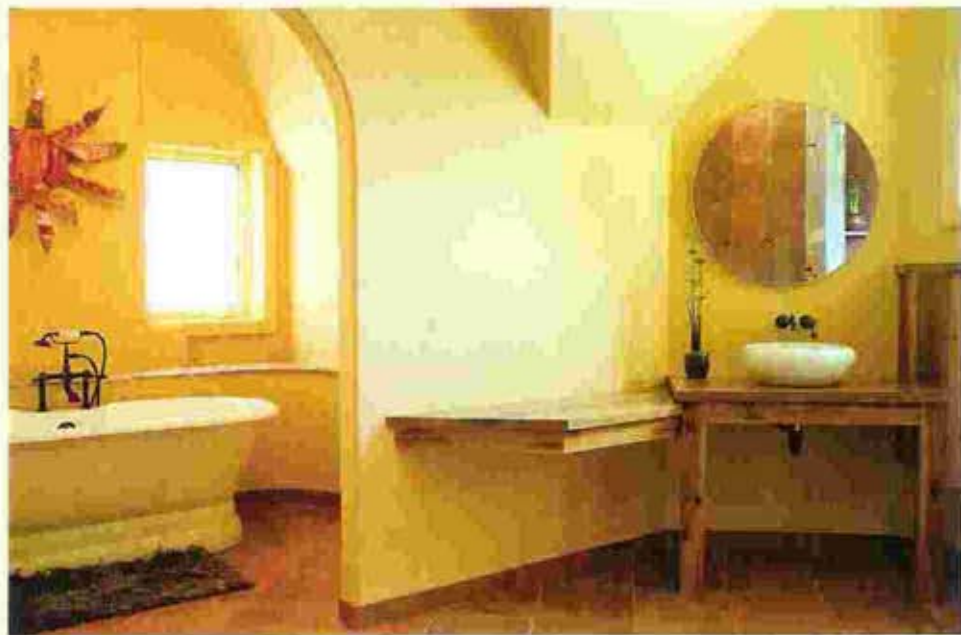
The third floor's lower ceilings and angled walls, defined by the home's roofline and structural supports, contrast with the space in the traditional 19th century first and second floors of the house. Stengel incorporated these structural features into the design, which emphasizes harmony, balance and simplicity, in keeping with the principles of Zen, which the owners wanted to emphasize. The new space also lends itself to the art the owners plan to display.

Following demolition of the old third floor apartment, the area was custom framed and wired for three-inch recessed lighting throughout. The stairwell to this area from the rest of the house incorporates exposed brick wall discovered during the demolition, and a raised ceiling to create a more open feeling.

The bedroom's rounded interior corners provide soft, flowing lines and are consistent with similar interior structure throughout the house. One and one-half inch red oak hardwood floors in the turret, bedroom, closet and elevator entrance areas match original floors in the rest of the house, and new casing and baseboards were constructed as exact replicas of the originals.

The 238-square foot bedroom features mahogany arched windows that are architecturally identical to the originals, with Benjamin Moore Chestertown Buff on the walls. The adjoining sitting room, 11 feet in diameter and providing 95 square feet of space, is in the turret, and features Marvin replacement windows, a commissioned lighting fixture by Brooke White of Flame Run, and a flat screen TV with surround sound. The walls are Benjamin Moore Fraser Fir.

The master bath is 176 square feet, and features American Olean San Martino Porcelain floor tile in Rosso on the floor, in the shower and in place of traditional baseboards. American Olean Candalaria English Ivy glass tile is featured in the doorless shower, and the tub room features a 68-inch cast iron pedestal



tub and a rounded wall with a shelf topped by Rojo Alicante honed marble.

His and hers vanities are custom designed, and make use of 110-year-old reclaimed poplar wood preserved from the demolition of the third floor. Her vanity features a 17-inch round white porcelain sink with oil-rubbed bronze finished fixtures. His vanity features an undermounted hammered copper bowl highlighted with a Honey onyx countertop from Pakistan, which is underlit to create an unusual lighting effect.

Arched passageways lead from the bathroom area to the 198-square foot closet/utility space and the elevator vestibule. The utility space features a U-Line Echelon Clear Combo ice maker/refrigerator and a Miele stack washer/dryer unit. A 12-inch round undermounted hammered copper sink and Brazilian Wild West Green granite countertops are featured here.

The elevator, which was incorporated while the remodeling project was in progress, is in a 40-foot shaft built as an exterior addition to the house in order to preserve the integrity of the interior space. It was a particular challenge to work within the confined space of the houses on St. James Court. Permission was granted by neighbors to temporarily remove fencing and create a workspace in an adjoining lot. Additional approval from the Louisville Landmarks Commission was also obtained before this portion of construction could begin.

The elevator shaft houses a dormer window that

replicates the original third floor dormer at each of the three floor levels, and is also accessible (including by wheelchair) from the exterior of the house. The custom scenic elevator car incorporates a window that allows riders to see outside, and music plays through a custom sound system on the 45-second ride from the ground to the third floor.

A Marvin door in the elevator entrance area on the third floor leads to an 80-square foot roof-top terrace designed when the elevator installation made it necessary to create a new roof area, featuring long-lasting copper roofing and gutters.



**Architects:** Kleier Associates Architects, Gury Kleier **Interior Design:** Todd Stengel **Interior Finishes:** Hikes Paints & Wallpapers, Wendy Gonzalez **Lighting:** Falls City Electric Supply **Custom Blown Art Glass Light Fixture:** Flame Run **Marvin Windows:** Architectural Window & Doors **Art Glass Windows:** Art Glass Mosaics, Inc. **Elevator:** Gould's Elevator & Accessibility Cabinets & Vanities **Drainage Studio Appliances:** Trend Technologies **Marble & Granite:** McDonald Marble & Stone, Inc. **Plumbing Fixtures:** Creative Kitchen & Bath **Tile:** Louisville Tile Distributors **Home Entertainment System:** Crawford Entertainment Systems, Inc.